

A Choral Flourish

SATB Chorus and Piano

Traditional Latin and L.S.A.

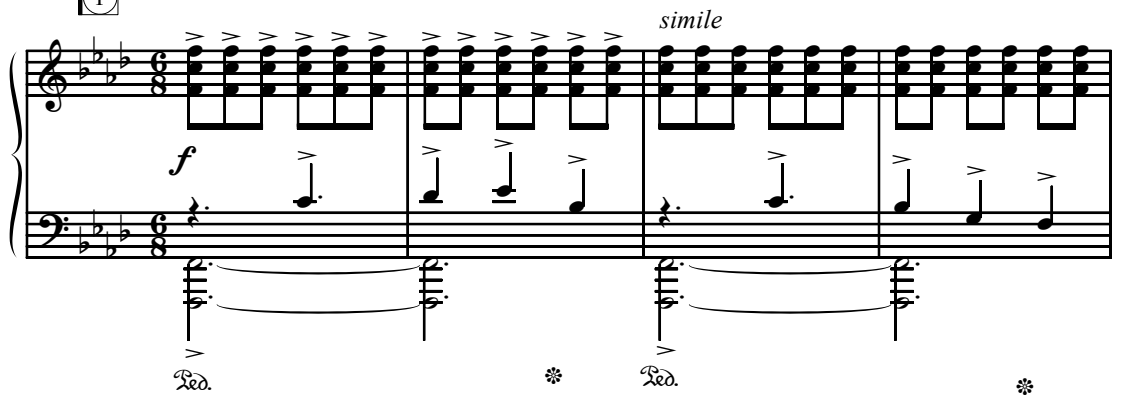
Linda Spevacek-Avery

Ranges: Soprano Alto Tenor Bass



With driving, rhythmic energy ♩ = 108

1



5 SA *f*

Plaud - i - te, plaud - i - te, clap your hands. Psal - li - te, psal - li - te,

TB *f*

This section contains the vocal parts and piano accompaniment for the second part of the piece. It starts at measure 5. The vocal parts (Soprano and Alto) and Tenor/Bass parts are shown with lyrics. The piano accompaniment is also shown. The music is in 6/8 time and includes dynamic markings like *f* and *Red.* (ritardando).

Duration: approx. 2:00

8

* ♩ = ♩

play your strings. Ju - bi - la - te De - o, om - nes ter - ra. —

ped. * *simile*

11

(2)

rit. *pizz.*

*Please note--the dotted quarter note pulse remains the same throughout, not the eighth note.

14 S *f div.* *p*
Al - le - lu - ia, — psal - li - te,

A *f* *p*
Al - le - lu - ia, psal - li - te,

T *p* *f*
Plaud - i - te, al - le -

B *p* *f div.*
Plaud - i - te, al - le -

18 *f*
al - le - lu - ia. —

f
al - le - lu - ia.

p
lu - ia. — Psal - li - te,

p
lu - ia. Psal - li - te, clap your

21

3

mf Al - le - lu - ia, — al - le - lu - ia. *f*

mf Al - le - lu - ia, al - le - lu - ia. *f* Plaud - i - te,

mf Al - le - lu - ia, al - le - lu - ia. *f* Al - le -

mf hands, play your strings. *f* Al - le -

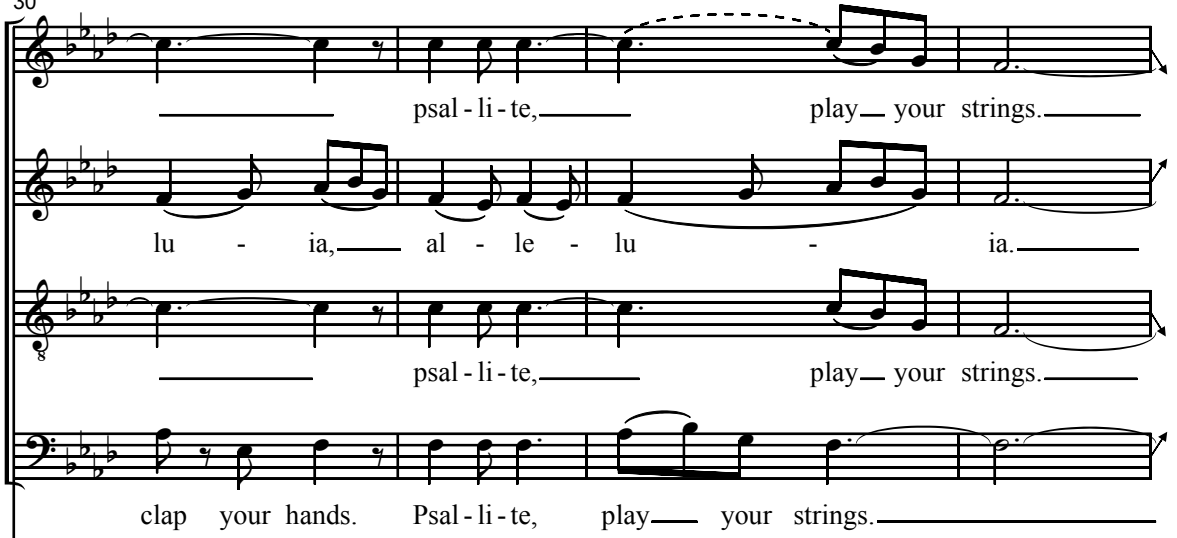
26

f Plaud - i - te, —

clap your hands. Psal - li - te, play — your strings. Al - le -

lu - ia, — al - le - lu - ia. — Plaud - i - te, —

lu - ia, — al - le - lu - ia. — Plaud - i - te,

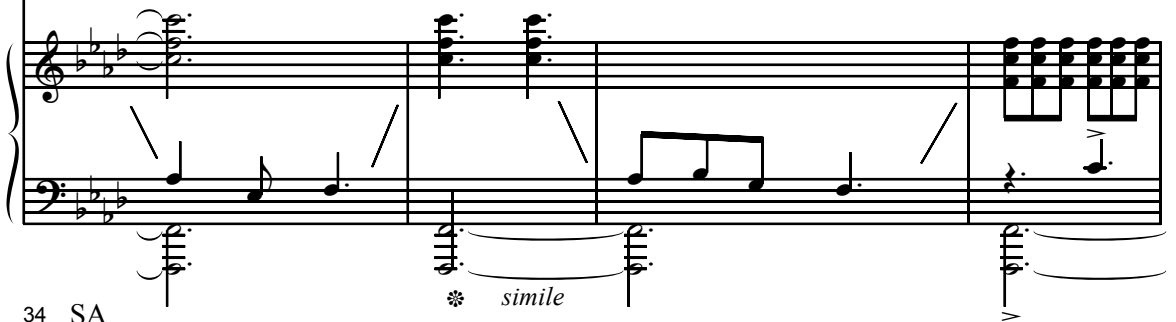


psal-li-te, play your strings.

lu-ia, al-le-lu-ia.

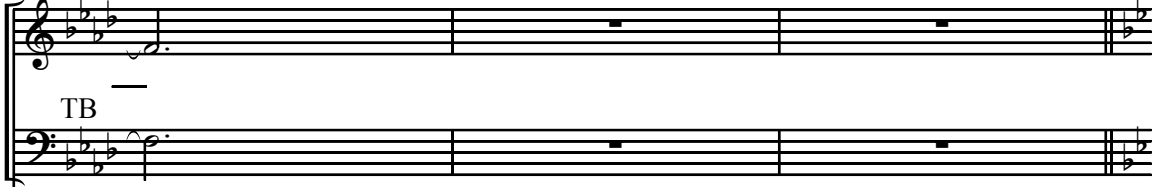
psal-li-te, play your strings.

clap your hands. Psal-li-te, play your strings.



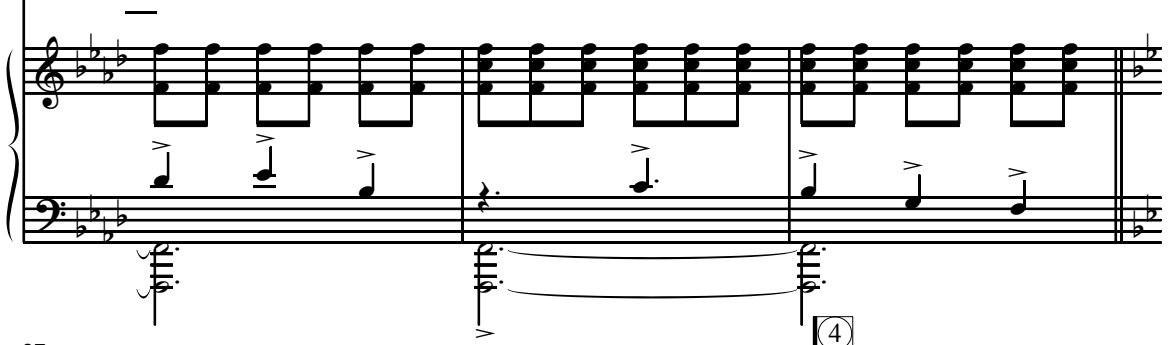
simile

34 SA

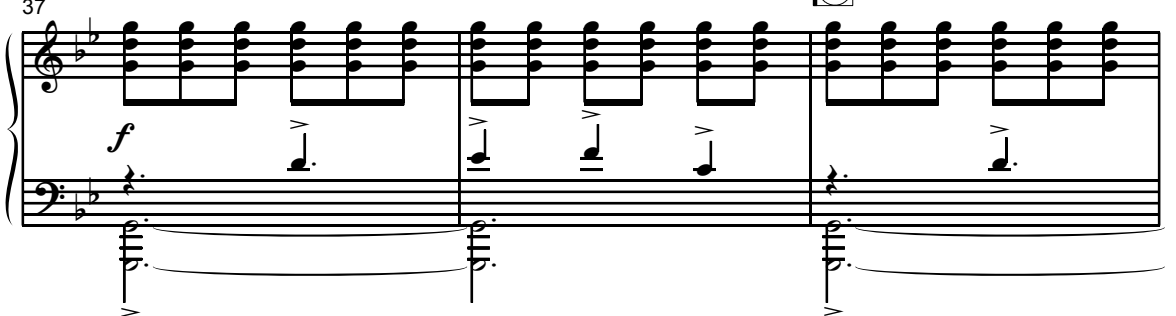


SA

TB



37



f

4

40 S *f* Al - le -

A *f* Plaud - i - te, plaud - i - te, clap your hands.

T *f* Al - le -

B *f* Plaud - i - te, plaud - i - te, clap your hands.

44 *All Clap*

lu - ia. *p*

- Psal - li - te, psal - li - te, play your strings.

lu - ia. *p*

- Psal - li - te, psal - li - te, play your strings. *pp*

5

Al - le - lu - ia.

Plaud - i - te,

Psal - li - te, play — your strings.

Al - le - lu - ia.

clap your hands. Psal - li - te, play — your strings.

59

SA *f*
Plaud - i - te, clap your hands. Psal - li - te, play— your strings.—

TB *f*
Plaud - i - te. Psal - li - te.

f

Detailed description: This system contains measures 59 through 62. It features three staves: a vocal line for Soprano Alto (SA) and Tenor Bass (TB), and a piano accompaniment. The SA part has lyrics 'Plaud - i - te, clap your hands. Psal - li - te, play— your strings.—' with a dynamic marking of *f*. The TB part has lyrics 'Plaud - i - te. Psal - li - te.' with a dynamic marking of *f*. The piano accompaniment consists of chords in the right hand and bass notes in the left hand, with a dynamic marking of *f*.

63

Detailed description: This system contains measures 63 through 66. It features three staves: vocal lines for SA and TB, and a piano accompaniment. The vocal lines are mostly sustained notes with some melodic movement. The piano accompaniment features a rhythmic pattern of chords in the right hand and bass notes in the left hand.

67

⑥

Detailed description: This system contains measures 67 through 70. It features three staves: vocal lines for SA and TB, and a piano accompaniment. The piano accompaniment has a consistent rhythmic pattern of chords in the right hand and bass notes in the left hand. A circled number '6' is placed above the piano staff in the first measure of this system.

10
71 SA *f*

Plaud - i - te, plaud - i - te, clap your hands._____

TB *f*

Plaud - i - te, plaud - i - te,

f

74

Psal - li - te, psal - li - te, play your strings._____

clap your hands._____

f

77 (7)

- Al - le - lu - ia,

f

Psal - li - te, psal - li - te, play your strings._____

al - le - lu - ia. *mf*

Al - le - lu - ia, al - le - *mf*

Plaud - i - te, plaud - i - te, clap your hands. Psal - li - te, psal - li - te, *p* *mf*

lu - ia. *p* *mf*

play your strings. Plaud - i - te, plaud - i - te, clap your hands. *f* *mf*

f