

A Patriotic Salute

TTBB/TBB* Chorus**, Piano, and Optional Trumpet†

Arranged by Linda Spevacek

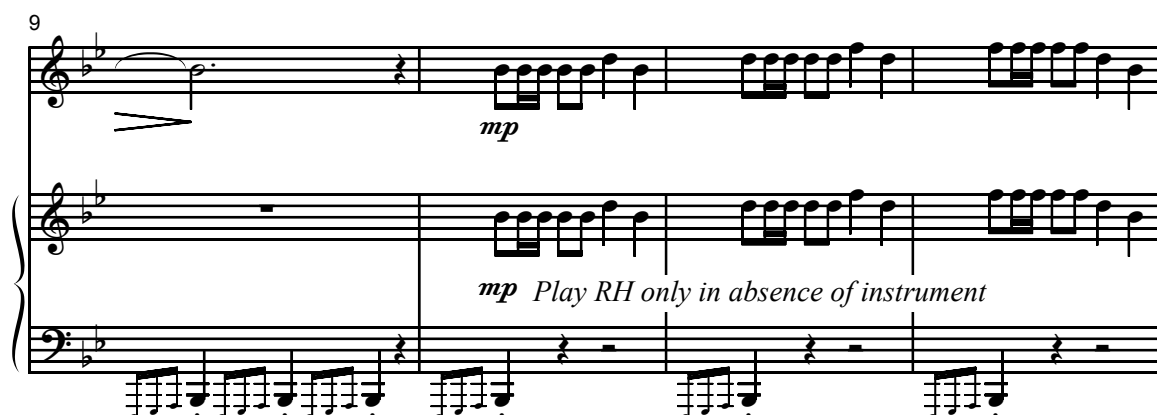
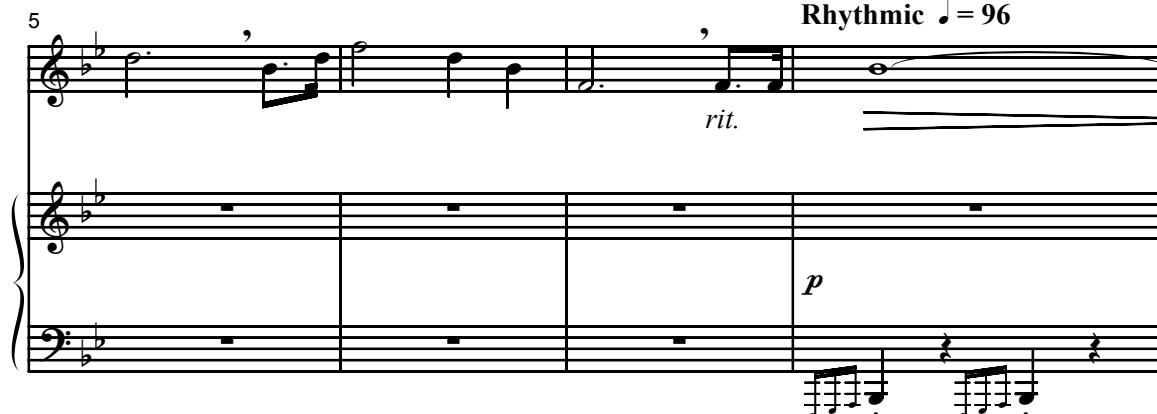
Ranges: Tenor I Tenor II Baritone Bass



① Expressively, freely ♩ = 56



Rhythmic ♩ = 96



Duration: approx. 4:10

*For TBB, omit the Tenor II part where the Tenors divide.

**Also available for SATB (15/1606H), Three-part Mixed/SAB (15/1617H) and Two-part (15/1625H).

†Trumpet part is on page 20.

© 2001, This arrangement © 2005 Heritage Music Press, a division of The Lorenz Corporation.

All rights reserved. Printed in U.S.A.

Unauthorized reproduction of this publication is a criminal offense subject to prosecution.

(♩ = ♩.)

13

p -Tr.

17 *When Johnny Comes Marching Home*

B/B p

When John - ny comes march - ing home a - gain, hur -

20 *T/T p*

T/T p

We'll give him a heart - y

rah! _____ Hur - rah! _____

23

wel - come then, hur - rah! _____ Hur - rah! _____ The

26

men will cheer and the boys will shout,
the lad - ies they — will

29

and we'll all feel safe when
all turn out,

② (♩. = ♩)

32

John - ny comes march - ing home. _____

Detailed description: This block contains the first system of music. It features a vocal line in the upper staff and a piano accompaniment in the lower staff. The vocal line begins with a treble clef and a key signature of two flats. The lyrics 'John - ny comes march - ing home.' are written below the vocal line, with a long horizontal line following the word 'home.' The piano accompaniment starts with a bass clef and a key signature of two flats. A second ending bracket is shown above the vocal line, with a circled '2' and the tempo marking '(♩. = ♩)'.

(♩. = ♩)

p +Tr.

Detailed description: This block shows the piano accompaniment for the first system. It consists of two staves: a treble staff and a bass staff. The treble staff contains chords and a melodic line with a trill marked '+Tr.'. The bass staff contains a rhythmic accompaniment. The tempo marking '(♩. = ♩)' is placed above the treble staff. The dynamic marking '*p*' is placed below the treble staff.

35 *Battle Hymn of the Republic* Slightly faster ♩ = 126

Glo - ry, glo - ry, hal - le - lu - jah!

mp *mp* O - ver hill, o - ver dale, we have

Detailed description: This block contains the second system of music. It features a vocal line in the upper staff and a piano accompaniment in the lower staff. The vocal line begins with a treble clef and a key signature of two flats. The lyrics 'Glo - ry, glo - ry, hal - le - lu - jah!' are written below the vocal line. The piano accompaniment starts with a bass clef and a key signature of two flats. The dynamic marking '*mp*' is placed below the vocal line. The tempo marking 'Slightly faster ♩ = 126' is placed to the right of the system.

mp -Tr.

Detailed description: This block shows the piano accompaniment for the second system. It consists of two staves: a treble staff and a bass staff. The treble staff contains chords and a melodic line with a trill marked '-Tr.'. The bass staff contains a rhythmic accompaniment. The dynamic marking '*mp*' is placed below the treble staff.

38 *The Caisson Song (Army)*

hit the dust - y trail, and those cais - sons go roll - ing a - long.

mf In and

Detailed description: This block contains the third system of music. It features a vocal line in the upper staff and a piano accompaniment in the lower staff. The vocal line begins with a treble clef and a key signature of two flats. The lyrics 'hit the dust - y trail, and those cais - sons go roll - ing a - long.' are written below the vocal line. The piano accompaniment starts with a bass clef and a key signature of two flats. The dynamic marking '*mf*' is placed above the vocal line. The tempo marking 'In and' is placed above the vocal line.

+Tr.

Detailed description: This block shows the piano accompaniment for the third system. It consists of two staves: a treble staff and a bass staff. The treble staff contains chords and a melodic line with a trill marked '+Tr.'. The bass staff contains a rhythmic accompaniment.

41

out, hear them shout, coun - ter march - ing right a - bout and those

mf

43

cais - sons go roll - ing a - long. For it's Hi! Hi! Hee! in the

unis. f

unis. f

-Tr. +Tr. *f* -Tr.

simile

46

field ar - til - ler - y. Count out your num - bers loud and

48 3

strong. And where-e'er we go, you will al-ways know

you will al-ways know that those

Anchors Aweigh (Navy)

51

mf **Faster** ♩ = 138

mf An - chors a - weigh, my boys,

cais-sons keep roll-ing a - long.

Faster ♩ = 138

mf Tr.

54

an - chors a - weigh. Fare - well to

unis.

57

col - lege joys, we sail at break of day, day, day, day.

60

Through our last night on shore, drink to the

63

foam. Un - til we meet once more, here's

66

wish-ing you a hap - py voy-age home. From the halls of Mon - te -

-Tr.

69

zu - ma, to the shores of Trip - o - li, We will

72

fight our coun - try's bat - tles in the air, on land and

75

sea. First we fight for right and free - dom and to

78

keep our hon-or clean. ————— We are proud to claim the

81

⑤

ti - tle of "U - nit - ed States Ma - rines!" You're a

84 *You're a Grand Old Flag*

Grand Old Flag, you're a high fly - ing flag; and for -

simile

Detailed description: This system contains measures 84 and 85. The vocal line (treble clef) has a melody with lyrics. The piano accompaniment (grand staff) features a steady bass line and chords in the right hand. A 'simile' marking is placed above the piano part in measure 85.

ev - er in peace may you wave! You're the em - blem of the

f

f

+Tr. -Tr.

Detailed description: This system contains measures 86, 87, and 88. The vocal line continues with lyrics. The piano accompaniment includes trills, marked '+Tr.' and '-Tr.'. A forte (*f*) dynamic is indicated above the vocal line in measures 87 and 88.

land I love, the home of the free and the brave. Ev'-ry

+Tr. -Tr.

Detailed description: This system contains measures 89, 90, and 91. The vocal line concludes with lyrics. The piano accompaniment features trills, marked '+Tr.' and '-Tr.'.

92

heart beats true for the red, white and blue, where there's

94

nev - er a boast or brag. But should auld acquaint - ance

+Tr.

97

be for-got, keep your eye on the Grand Old Flag.

6

I'm a Yankee Doodle Dandy

100 *f* I'm a Yan - kee Doo - dle Dan - dy, a -
f I *know a boy, He is a dan - dy,
f Bum *bum bum bum bum

102 Yan - kee Doo - dle do or die. A
Yan - kee Doo - dle do or die.
bum bum bum bum bum.

*detached, not legato

104

real live neph - ew of my Un - cle Sam,

Oh, yes, he's

Bum bum Bum bum bum

106

born on the Fourth of Ju - ly. I've

born the Fourth of Ju - ly.

bum bum

108 got a Yan - kee Doo - dle sweet - heart,
He has a girl, He's got a sweet - heart,
Bum bum bum bum

110 She's my Yan - kee Doo - dle joy.
She's his Yan - kee Doo - dle joy.
bum bum bum bum bum.

112 *unis.*

Yan - kee Doo - dle came to Lon - don rid - ing on a pon - y.

8va

(whistle 8va)

8va

-Tr.

114 7

He is my Yan - kee Doo - dle Boy!

(whistle 8va)

8va

f (opt. T) *unis.*

Bum bum bum bum bum. O—

loco

+Tr. *f*

116 *The Star Spangled Banner**I'm a Yankee Doodle Dandy*

say can you see that I'm a Yan-kee Doo-dle

The musical score for 'I'm a Yankee Doodle Dandy' consists of three systems. The first system shows the vocal line with lyrics 'say can you see that I'm a Yan-kee Doo-dle'. A dashed line above the vocal line indicates a slur over the notes 'can you see'. The piano accompaniment is in the right hand, with a steady eighth-note bass line in the left hand.

119 *f You're a Grand Old Flag*

You're a Grand Old Flag, you're a
Dan - dy,

simile

The musical score for 'You're a Grand Old Flag' consists of three systems. The first system shows the vocal line with lyrics 'You're a Grand Old Flag, you're a'. The piano accompaniment features a steady eighth-note bass line in the left hand and chords in the right hand. The word 'simile' is written in the piano part.

121 *America, the Beautiful*

high fly - ing flag. A - mer - i - ca! A - mer - i - ca! God

simile

The musical score for 'America, the Beautiful' consists of three systems. The first system shows the vocal line with lyrics 'high fly - ing flag. A - mer - i - ca! A - mer - i - ca! God'. The piano accompaniment features a steady eighth-note bass line in the left hand and chords in the right hand. The word 'simile' is written in the piano part.