

Sourwood Mountain

Two-part Chorus and Piano

Trad., alt.

American Mountain Fiddle Tune
Arranged by Victor C. Johnson

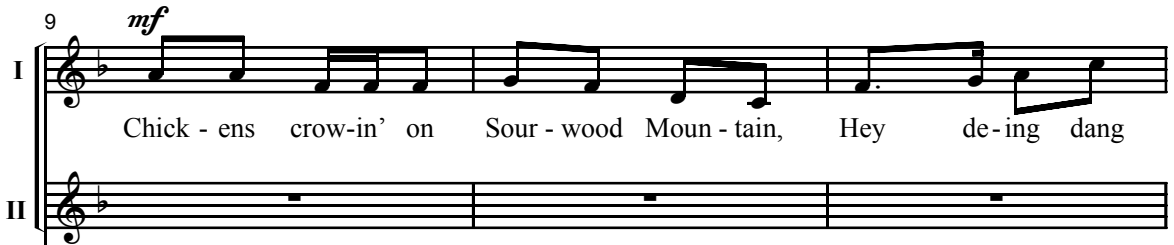
Ranges: Part I Part II



Spirited ♩ = 104-108



alla-string bass



Duration: approx. 1:05

© 2005 Heritage Music Press, a division of The Lorenz Corporation. All rights reserved. Printed in U.S.A.
Unauthorized reproduction of this publication is a criminal offense subject to prosecution.

THE CCLI LICENSE DOES NOT GRANT PERMISSION TO PHOTOCOPY THIS MUSIC.

www.lorenz.com

12

I did-dle al - ly day,

II *mf* So man-y pret-ty girls, I can't count 'em,

15

I *mp* My true love, she

II *mp* Hey de-ing dang did-dle al - ly day. My true love, she

18

I lives in Letch - er, Hey de-ing dang did-dle al - ly day,

II lives in Letch - er, Hey de-ing dang did-dle al - ly day,

21

I *sub. mp*
 She won't come and I won't fetch her, Hey de-ing dang did-dle al-ly

II *sub. mp*
 She won't come and I won't fetch her, Hey de-ing dang did-dle al-ly

cresc. *f*

25

I *cresc.*
 day.

II *cresc.*
 day.

mp *mf well marked*

29

I *mf*
 Hey de - ing dang did-dle al-ly

II *mf*
 My true love's a blue-eyed dai - sy, Hey de-ing dang did-dle al-ly day,

33

I day, al - ly day, Hey de-ing dang

II If I don't get her, I'll go cra - zy, Hey de-ing dang

36 *mp*

I did-dle al - ly day. My true love lives in the hol - low,

II did-dle al - ly day. My true love lives in the hol - low,

mp

39 *mf*

I Hey de - ing dang did-dle al - ly day, She won't come

II Hey de - ing dang did-dle al - ly day, and

mf