

Baloo Lammy

SATB Chorus and Piano*

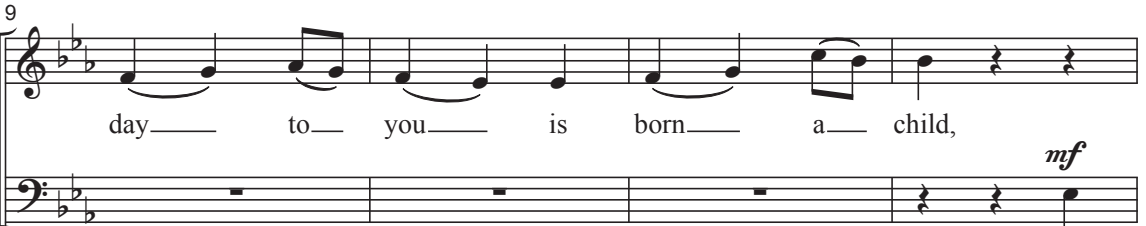
Traditional, with additional material
by Ruth Morris Gray

Ruth Morris Gray
Based on a 17th Century Scottish Carol

Ranges: Soprano Alto Tenor Bass



① Lively $\text{♩} = \text{ca. } 48-50$



Duration: approx. 2:00

*Also available: Performance/Accompaniment CD (99/2932H).

© 2012 Heritage Music Press, a division of The Lorenz Corporation. All rights reserved. Printed in U.S.A.

Unauthorized reproduction of this publication is a criminal offense subject to prosecution.

THE CCLI LICENSE DOES NOT GRANT PERMISSION TO PHOTOCOPY THIS MUSIC.

13 2 S div.

That

moth - er — Ma - ry, so meek — and — mild.

17

mp bless - ed babe, — so lov - ing and — kind, shall

Ba - loo lam - my, ba - loo lam - my.

21

now — re - joice — both heart — and — mind. Ba -

Ba - loo lam - my, ba - loo.

25 (handclaps)

loo - lam - my.
Ba - loo lam - my.

mf

1X 2X

3	4
---	---

29

(handclaps) *mf*

33

A star - shines - bright - ly a -

mp
p

37

bove where he lay, the ti - ny

40

ba - by a - sleep in the hay.

mf

That

mp

43

The
(mel.)
The

p

mp

p

47 shep - herds tend - ing their flocks near - by, when
 shep - herds are — tend - ing their flocks — near - by, when

51 an - gels ap - pear sing - ing: "Glo - ry on — high!" *cresc.*
 an - gels ap - pear sing - ing: "Glo - ry on — high!" Ba -

55 loo, *cresc.* ba - loo, ba -

lam - my, lam - my, ba -