

Bound for Glory!

Two-part Chorus and Piano*

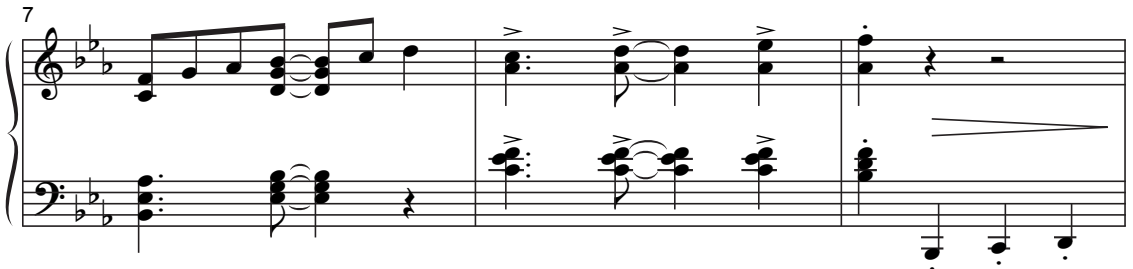
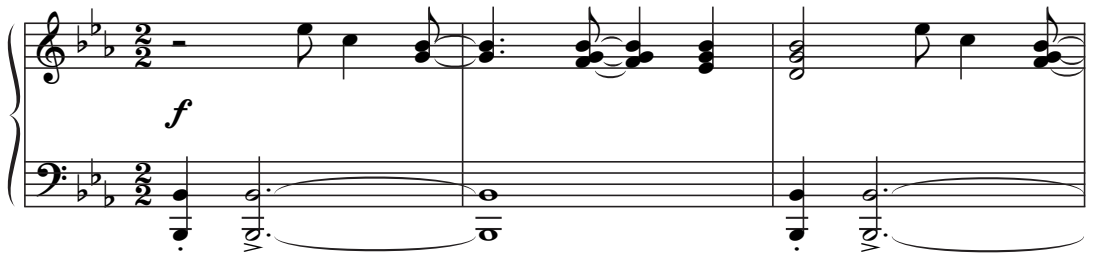
Traditional, alt. D.E.W.

Douglas E. Wagner
Incorporating the American spirituals
This Train and *The Gospel Train*

Ranges: Part I Part II



1 Excitedly, with anticipation $\text{♩} = \text{ca. } 92$



Duration: approx. 2:10

*Also available: Three-part Mixed (15/2986H); Performance/Accompaniment CD (99/3051H).

© 2013 Heritage Music Press, a division of The Lorenz Corporation. All rights reserved. Printed in U.S.A.
Unauthorized reproduction of this publication is a criminal offense subject to prosecution.

THE CCLI LICENSE DOES NOT GRANT PERMISSION TO PHOTOCOPY THIS MUSIC.

www.lorenz.com

10 *mf*

I This train is bound for glo - ry, this train.

II *mf*
This train is bound for glo - ry, this train.

mf

13

I — This train is bound for glo - ry,

II — This train is bound for glo - ry,

16

I this train. This train is

II this train. This train is

19

I bound for glo - ry, rid - ers all, a - mong the good and ho - ly.

II bound for glo - ry, rid - ers all, a - mong the good and ho - ly.

22

I This train is bound for glo - ry, this train, this

II This train is bound for glo - ry, this train, this

2

25

I train. *f* This train has a des - ti - na - tion,

II train.

28

I
this train. _____ This train has a

f

II
This train has a des - ti - na - tion.

31

I
des - ti - na - tion, this train. _____

II
This train has a des - ti - na - tion.

34

I
This train has a des - ti - na - tion, soon be pull-in' in that

II
soon be pull-in' in that